

AFIORA

T U L U M





Welcome home



Aflora is a
community
created
for you

*A portal connecting
modern convenience
with timeless elegance.*

*We invite you to
discover a unique living
experience surrounded
by art and nature.*

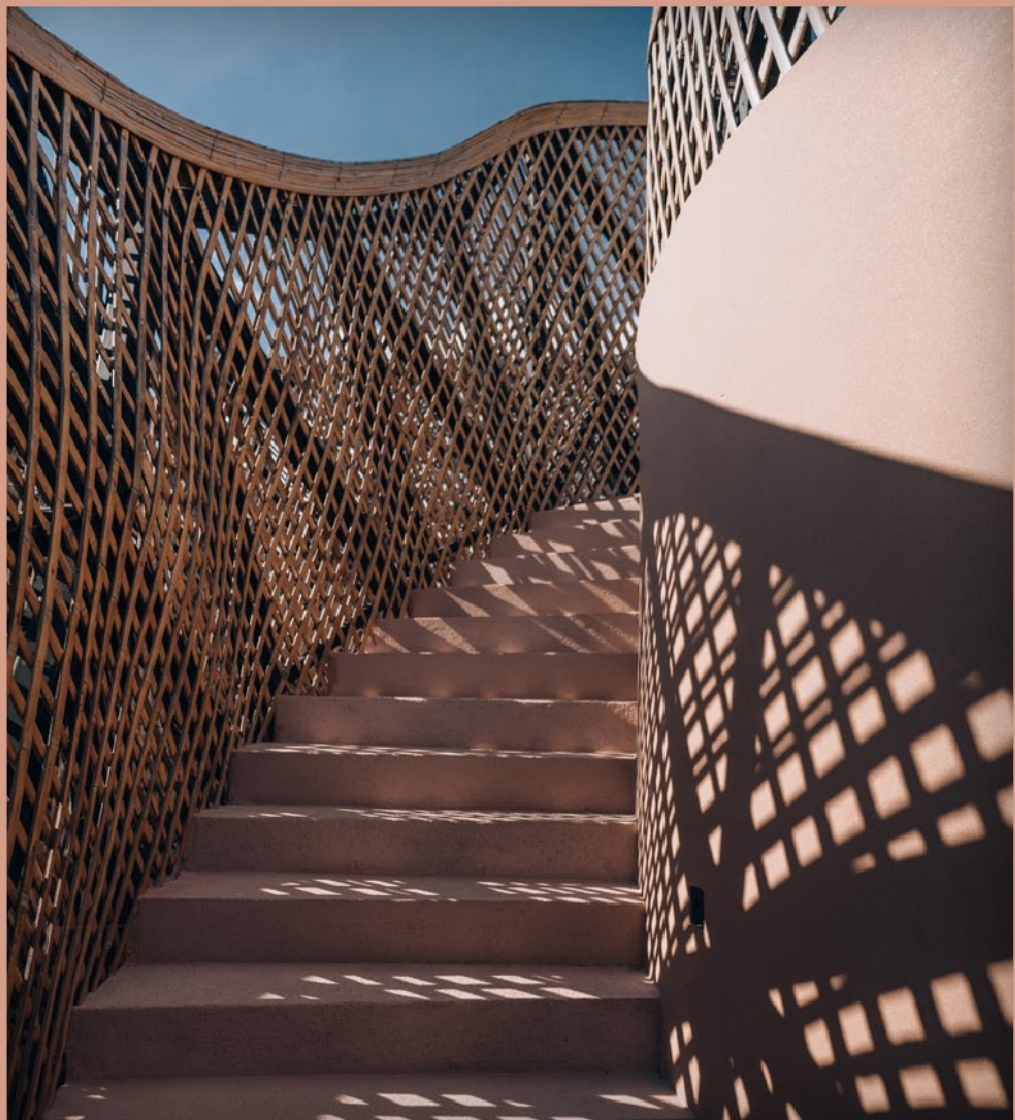




A world of magic

Become inspired by the natural beauty of the jungle, living in harmony with the environment

Nestled amidst lush jungle with access to private parks, swimming pools, elevators, and rooftop gardens, Aflora offers the finest in Tulum living.





A place where ideas are born and inspiration awakens

Become a local in our global community

*A tribe of unique individuals with
a common goal of mindful living*

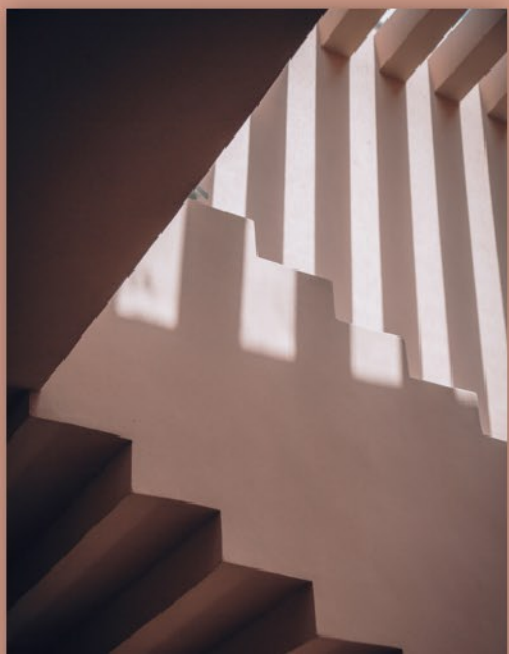
*Aflora sits on a lush 3-hectare site less
than 2 km to the beach inside the prime
neighborhood of Aldea Zama.*



ALDEA ZAMÁ

-  Eco-efficient appliances
-  Solar Energy
-  Low density community
-  Permeable Trails
-  Green Terraces
-  Recycling and Composting
-  Native landscaping
-  Passive Solar Design
-  Jungle Preservation Areas





Aflora provides
a sanctuary
for creation,
inspiration, and
introspection

*From sculptural architecture,
designed in harmony with
nature, to timeless interiors
that delight the senses.*

Our Residences



*WONDER
LOFT
VILLAGE*



Connect, grow, flourish

Our lofts were designed for travelers looking for a meaningful stay

Luxury and comfort meet in our Wonder Loft Village, where every detail has been carefully crafted to create an unparalleled short-stay experience.

With 68 stylish and thoughtfully designed units, our Loft Village offers a unique blend of comfort, sophistication, and functionality.







LOFT

Interior: 362.52 ft² / 33.68m²

Exterior: 76.11 ft² / 6.70m²

Total: 438.64 ft² / 40.38m²

-  One Bedroom
-  Dining Area
-  Full Bathroom
-  Kitchen
-  Terrace





MAGIC APARTMENT TOWERS

A secluded community
focused on luxury living

*Experience ultimate comfort and
relaxation in our spacious living
areas, beautifully designed to cater to
your every need.*





ONE BEDROOM



GARDEN HOUSE

Interior: 782.53 ft² / 72.70 m²

Terrace: 97.84 ft² / 9.09 m²

Exterior: 224.10 ft² / 20.82 m²

Total: 1,104.48 ft² / 102.61 m²



STANDARD

Interior: 782.53 ft² / 72.70 m²

Terrace: 97.84 ft² / 9.09m²

Total: 880.38 ft² / 81.79 m²



PENTHOUSE

Interior: 785.01 ft² / 72.93 m²

Terrace: 97.84 ft² / 9.09 m²

Exterior: 789.10 ft² / 73.31 m²

Total: 1,671.95 ft² / 155.3 m²



THREE BEDROOM



GARDEN HOUSE

Interior: 1,471.39 ft² / 131.68m²

Terrace: 175.77 ft² / 16.33m²

Exterior: 758.53 ft² / 70.47m²

Total: 2,351.69 ft² / 218.48m²

STANDARD

Interior: 1,415.23 ft² / 131.48m²

Terrace: 175.88 ft² / 16.34m²

Total: 1,591.11 ft² / 147.82m²





PENTHOUSE

Interior: 1,412.44 ft² / 131.22m²

Terrace: 175.77 ft² / 16.33m²

Exterior: 1,450.00 ft² / 134.71m²

Total: 3,038.22 ft² / 282.26m²



LUXURY COLLECTION

Enjoy enormous spaces designed for year-round living, bespoke furniture, handcrafted decor, and carefully selected materials that adorn your space, ensuring a memorable and comfortable experience.



TWO BEDROOM LUXURY

Interior: 1,506.40 ft² / 139.95m²

Terrace: 195.36 ft² / 18.15 m²

Total: 1,701.77 ft² / 158.10 m²



THREE BEDROOM LUXURY

Interior: 2,124.90 ft² / 197.41m²

Terrace: 273.61 ft² / 25.42m²

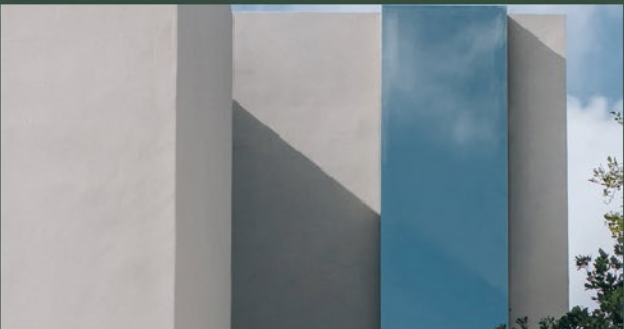
Total: 2,398.52 f / 222.83 m²

ESSENCE LUXURY VILLAS

Welcome to the most
exclusive residences in Aflora

*Tailor-made private homes that provide spacious
interiors, majestic gardens, ample pools, and
unmatched views while enjoying access to all the
amenities and conveniences of Aflora.*





ESSENCE LUXURY VILLAS

Interior: 2,501.96 ft² / 232.44m²
Terrace: 625.38 ft² / 58.10m²
Exterior: 1,611.03 ft² / 149.67m²
Total: 4,738.38 ft² / 440.21m²



*Ask your agent about our villa options



AMENITIES




















15 unique amenities surrounded by jungle

Our community offers endless opportunities for inspiration, activation, fitness, leisure, and introspection.



Enjoy the seclusion
of our protected
jungle habitat

- 
-  Wellness Lagoon
 -  Panza Dining & Bar
 -  Bath House Spa & Temazcal
 -  Sunset Tower Lobby
 -  Wellness Tower
 -  Coworking Lounge
 -  Semi-olympic Pool
 -  Infinity Pool
 -  Climbing Wall
 -  Acrobatic Practice Area
 -  Sculpture Garden
 -  Kids Playground
 -  Hanging Net
 -  Hammocks & swings

Aflora offers access to the finest wellness experiences in Tulum

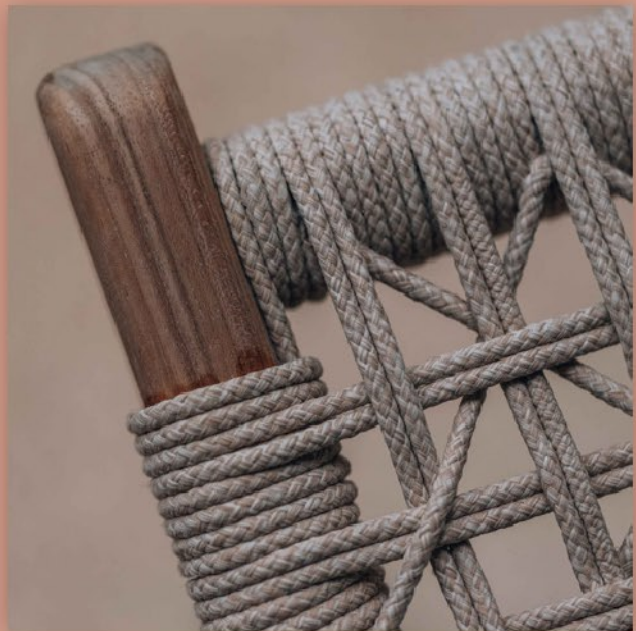
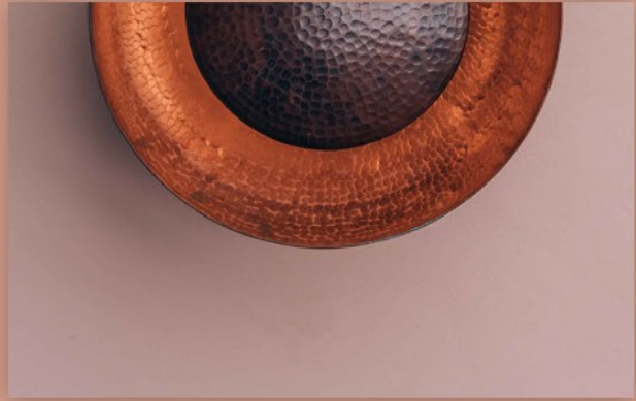
Enjoy a state-of-the-art Bathhouse filled with unique offerings. From our one-of-a-kind floatarium to our world-class holistic treatments.



Bespoke Design

Hand-Crafted Furniture & Decor

*From the workshops of Mexico's
finest artisans to your home, Aflora
provides handcrafted interiors with
timeless quality and appeal.*





Each texture and material has been carefully selected for quality, comfort, and individuality.



Aflora showcases the beauty and charm of Mexico's artistic soul, offering unique elements and custom pieces designed to complement our exclusive style.

Handpicked Materials

Designed to impress,
built to last

Aflora is mindfully constructed with high-end materials designed to complement our unique tropical climate.

Aflora exudes modern elegance and sophistication with unique COP microcement finishes, providing a timeless natural look throughout our residences.

Aflora features high-quality aluminum sliding doors and windows, making your home more energy efficient and provide superior noise reduction and security.

Rosa Morada wood accents add an extra touch of warmth and natural beauty to your living space, creating a calm and inviting atmosphere.

The unique mineral-based exterior finish, Corev, provides exceptional look and feel; These top-of-the-line construction materials and finishes ensure Aflora is a wise and sustainable choice for your lifestyle and the environment.





Verónica Cornejo

ASESOR INMOBILIARIO
RIVIERA MAYA

MATRÍCULA ESTATAL:
3162323HH0F0GFS008000856

Tu asesor de confianza en la Riviera Maya y Cancún, con experiencia en el sector inmobiliario de la zona desde 2020.

Contáctame y juntos encontraremos tu propiedad e inversión ideal en este paraíso caribeño.

"En la crisis se consciente del peligro, pero reconoce la oportunidad" - J.F.K.



A.M.P.I.
Playa del Carmen



REALTOR

[mayanpropertielite.com](https://www.mayanpropertielite.com)

vero.cornejo@mayanpropertielite.com



Verónica
Cornejo
ASESOR INMOBILIARIO



52 984 179 2198



mayanpropertielite



MayanPropertiesElite



@mayanproperties.advisor